

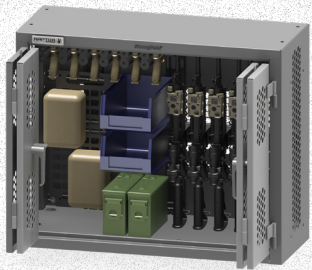
# **TABLE OF CONTENTS**

- ▶ **CABINETS**
- ▶ **WEAPONS CART**
- ▶ **WEAPONS CLEANING TRAILER**
- ▶ **WEAPONS SPECIFIC MOUNTING**
- ▶ **ARMORY EXAMPLES**
- ▶ **CUSTOM**
- ▶ **ABOUT RAPTOR**
- ▶ **ABOUT STRONG HOLD**

# CABINETS



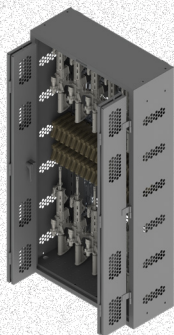
- ▶ Made in the USA from heavy-duty, high-tech polymer and steel.
- ▶ 3,000 lb stacking capacity with fastening ganging from the top-to-bottom, side-to-side, and back-to-back.
- ▶ Can be customized for unique weapons and applications, including your choice of multiple access methods.



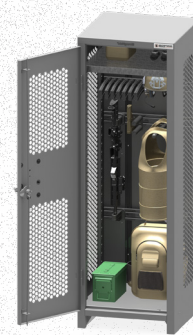
**34-INCH**



**60-INCH**



**84-INCH**



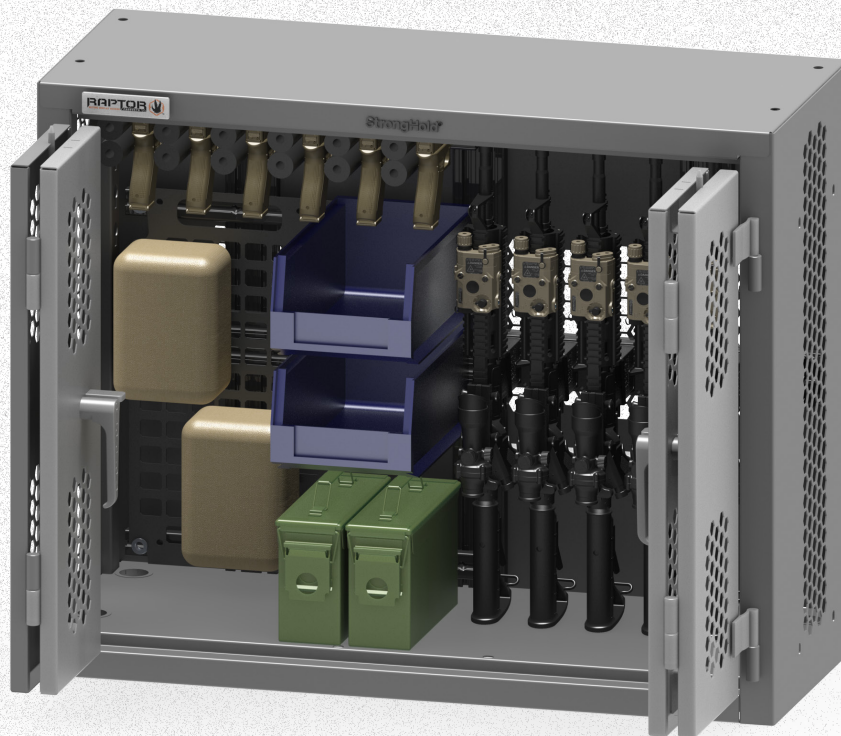
**OPERATOR**



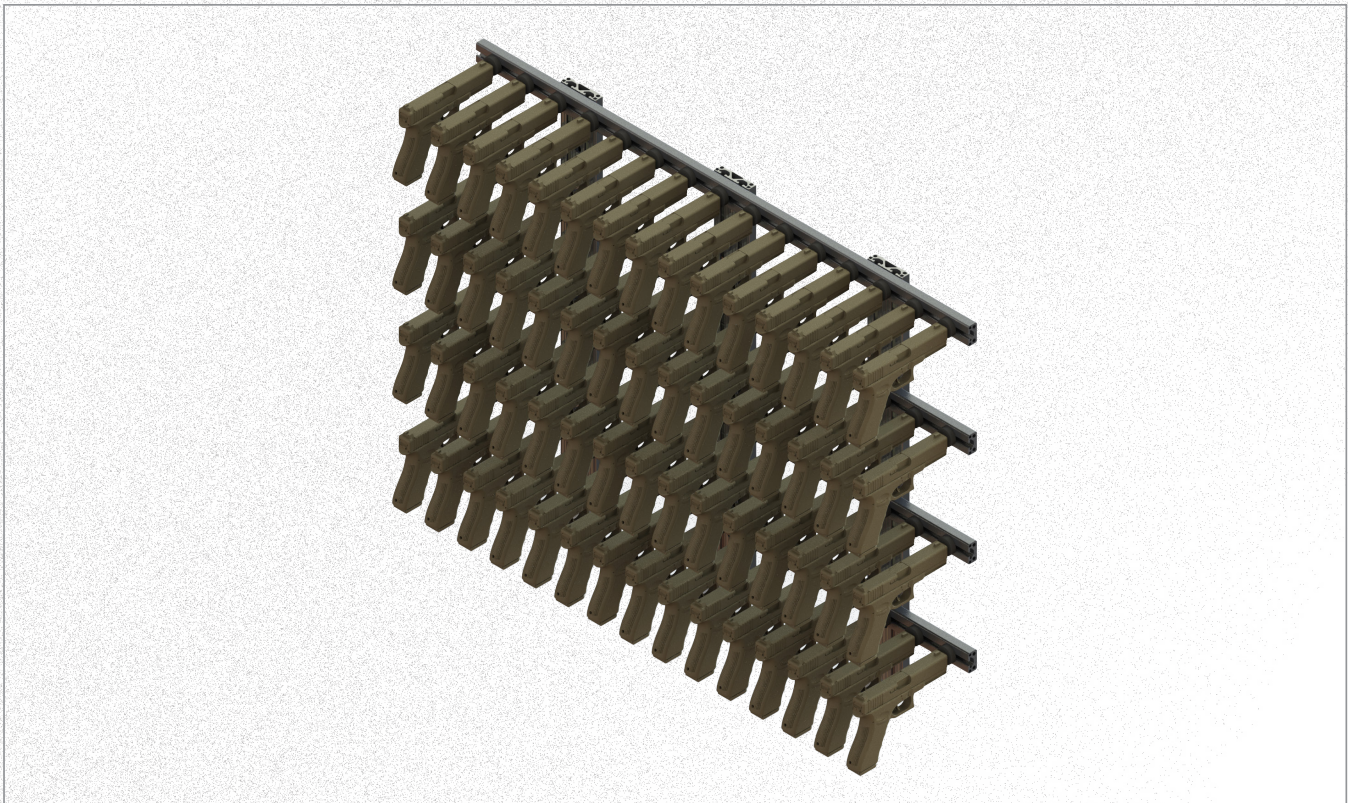
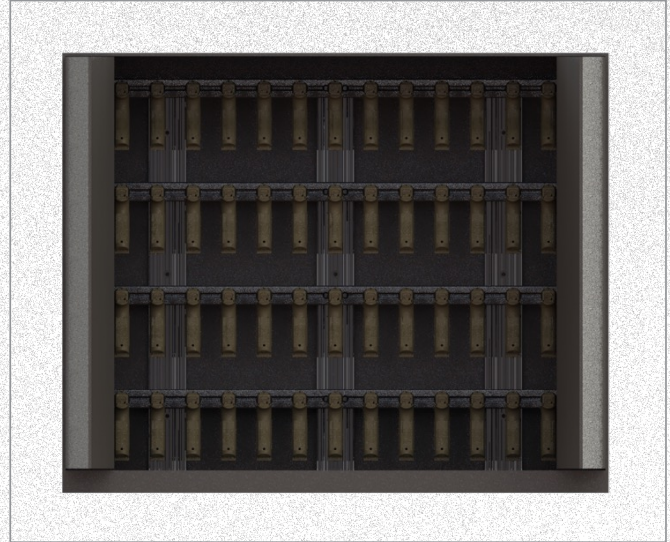
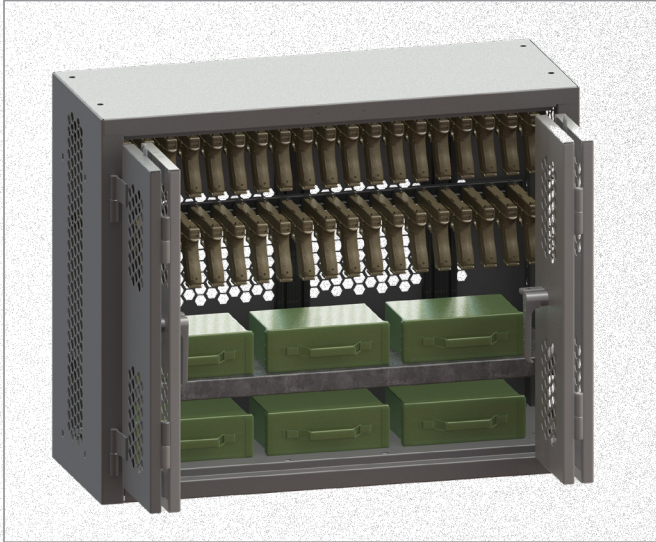
# 34-INCH CABINET



- ▶ Dimensions | 34”H x 16”D x 42”W
- ▶ 14 gauge, all-welded body construction.
- ▶ Interior utilizes Raptor’s™ “Auto-locking” Technology.
- ▶ Raised bottom elevates weapons 2.5” from the ground.
- ▶ Hex ventilated pattern on body and doors allows for airflow (diamond pattern available on request).



# 34-INCH CABINET INTERIOR DETAILS & ALT VIEWS



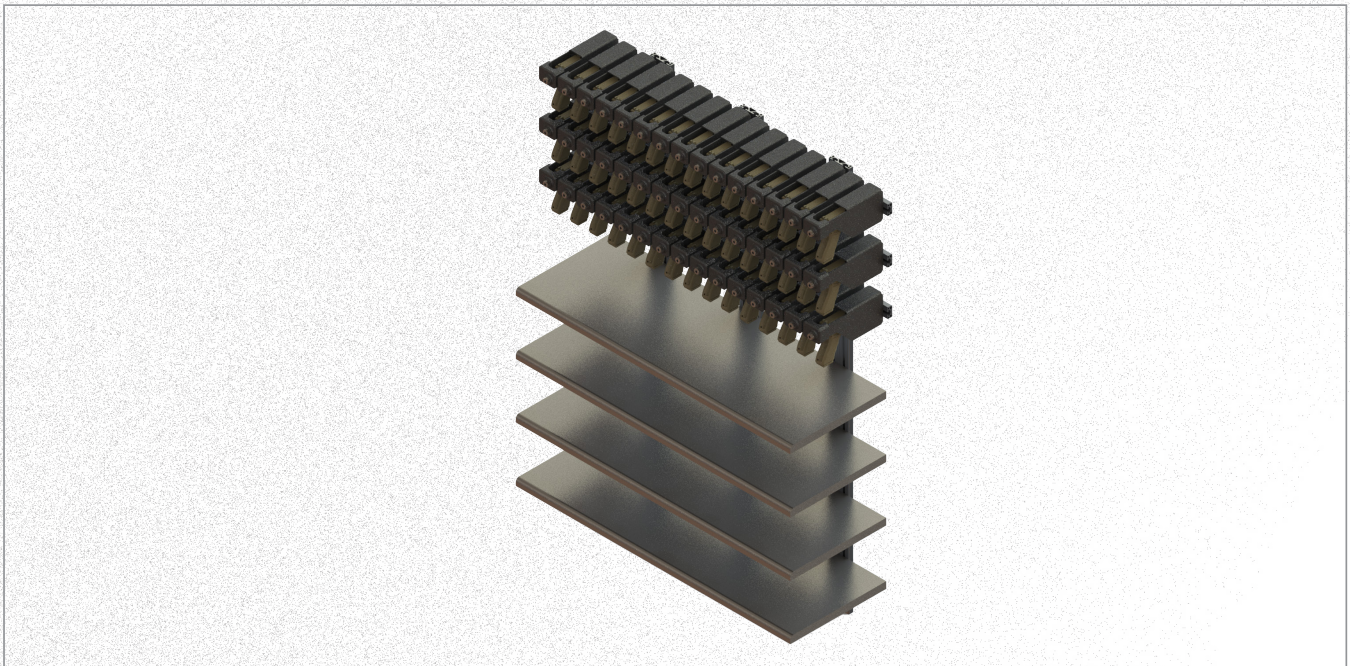
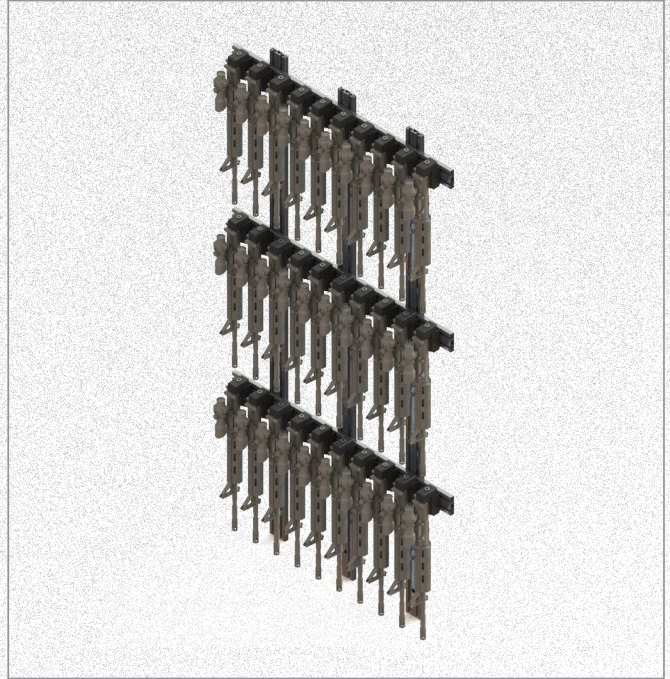
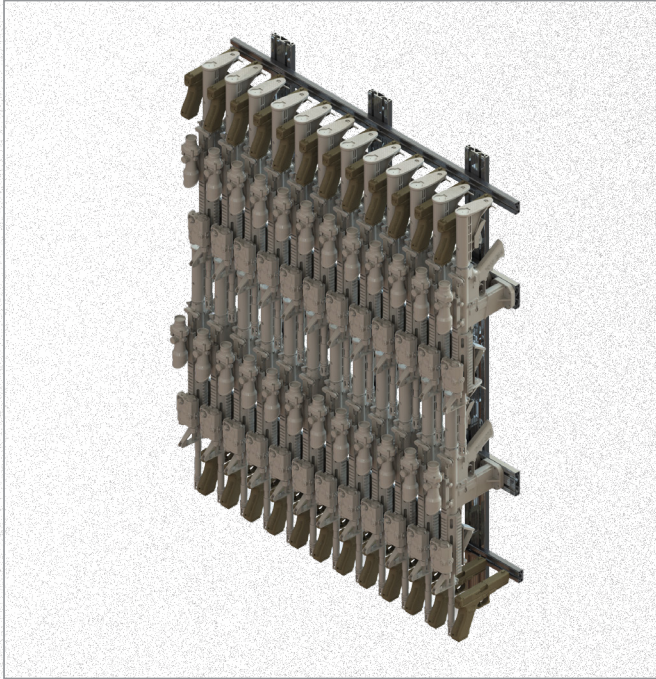
# 60-INCH CABINET



- ▶ Dimensions | 60”H x 16”D x 42”W
- ▶ 14 gauge, all-welded body construction.
- ▶ Interior utilizes Raptor’s™ “Auto-locking” Technology.
- ▶ Raised bottom elevates weapons 2.5” from the ground.
- ▶ Hex ventilated pattern on body and doors allows for airflow (diamond pattern available on request).



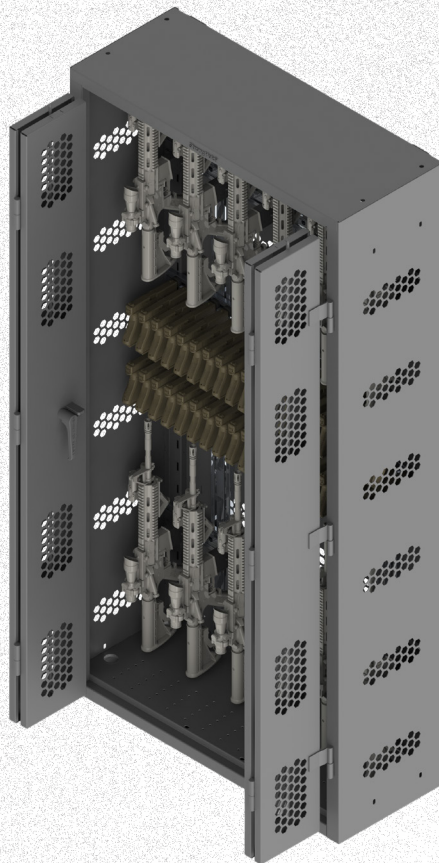
# 60-INCH CABINET INTERIOR DETAILS



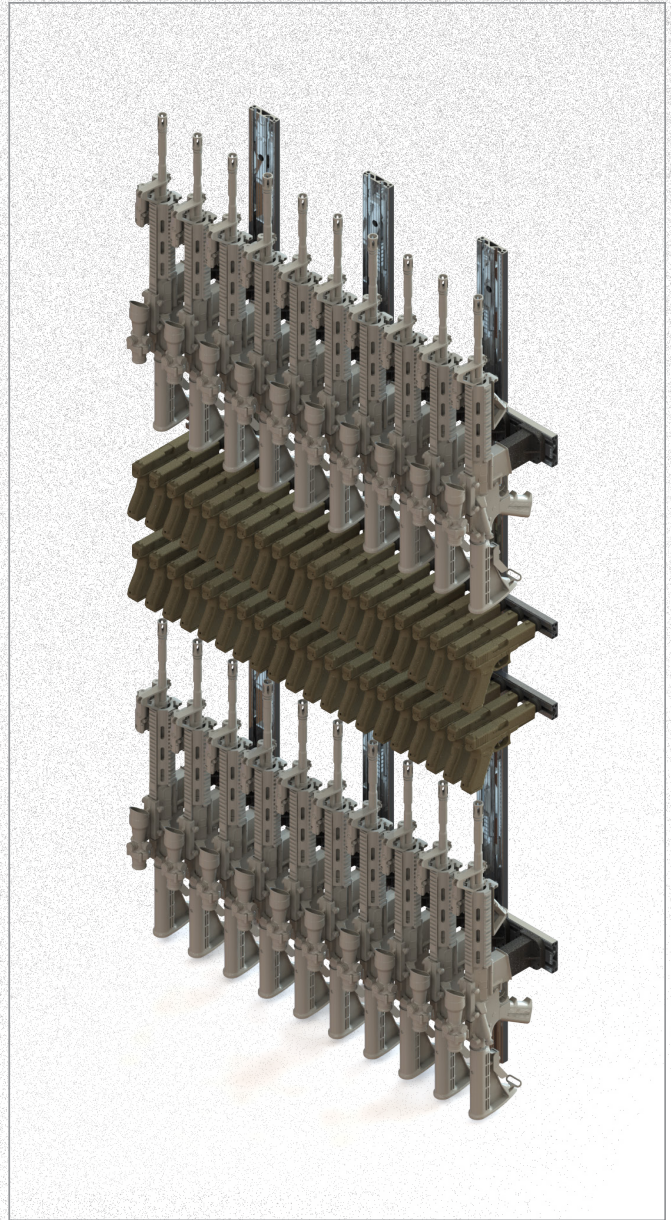
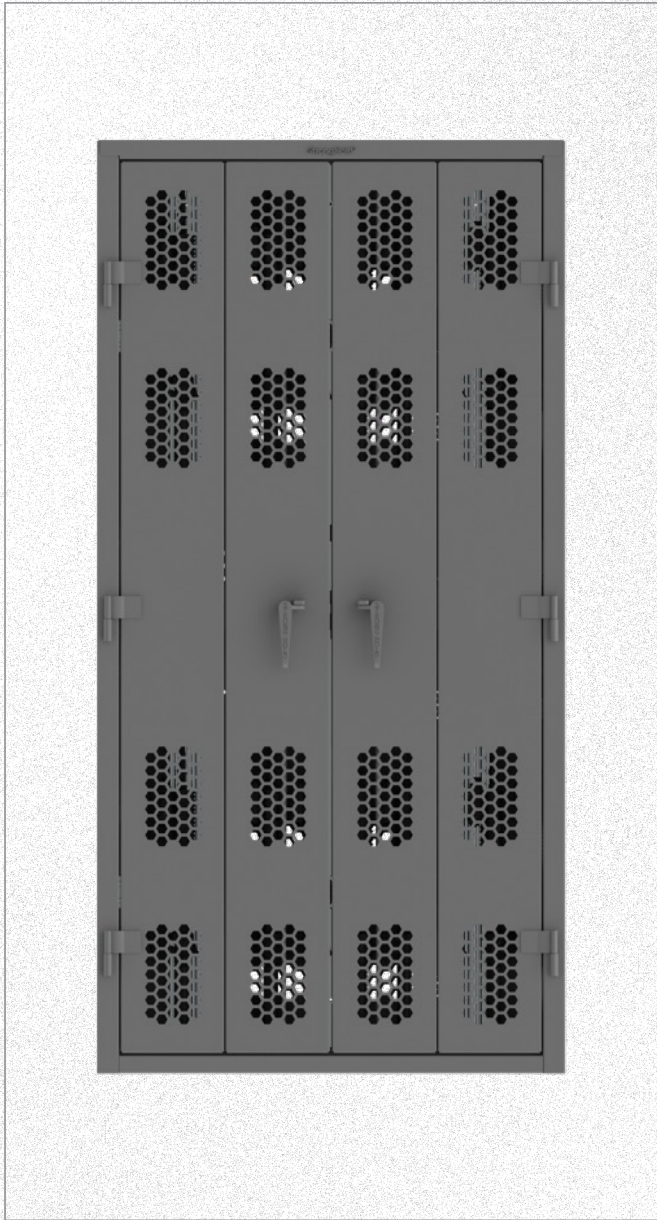
# 84-INCH CABINET



- ▶ Dimensions | 84”H x 16”D x 42”W
- ▶ 14 gauge, all-welded body construction.
- ▶ Interior utilizes Raptor’s™ “Auto-locking” Technology.
- ▶ Raised bottom elevates weapons 2.5” from the ground.
- ▶ Hex ventilated pattern on body and doors allows for airflow (diamond pattern available on request).



# 84-INCH CABINET INTERIOR DETAILS & ALT VIEWS





# OPERATOR CABINET



- ▶ Dimensions | 75”H x 24”D x 24”W
- ▶ 14 gauge, all-welded body construction.
- ▶ Interior utilizes Raptor’s™ “Auto-locking” Technology.
- ▶ Raised bottom elevates weapons 2.5” from the ground.
- ▶ Hex ventilated pattern on body and doors allows for airflow (diamond pattern available on request).



# OPERATOR CABINET INTERIOR DETAILS & ALT VIEWS



(800) 880.2625 | [strong-hold.com](http://strong-hold.com) | [usaraptor.com](http://usaraptor.com)

# WEAPONS CART

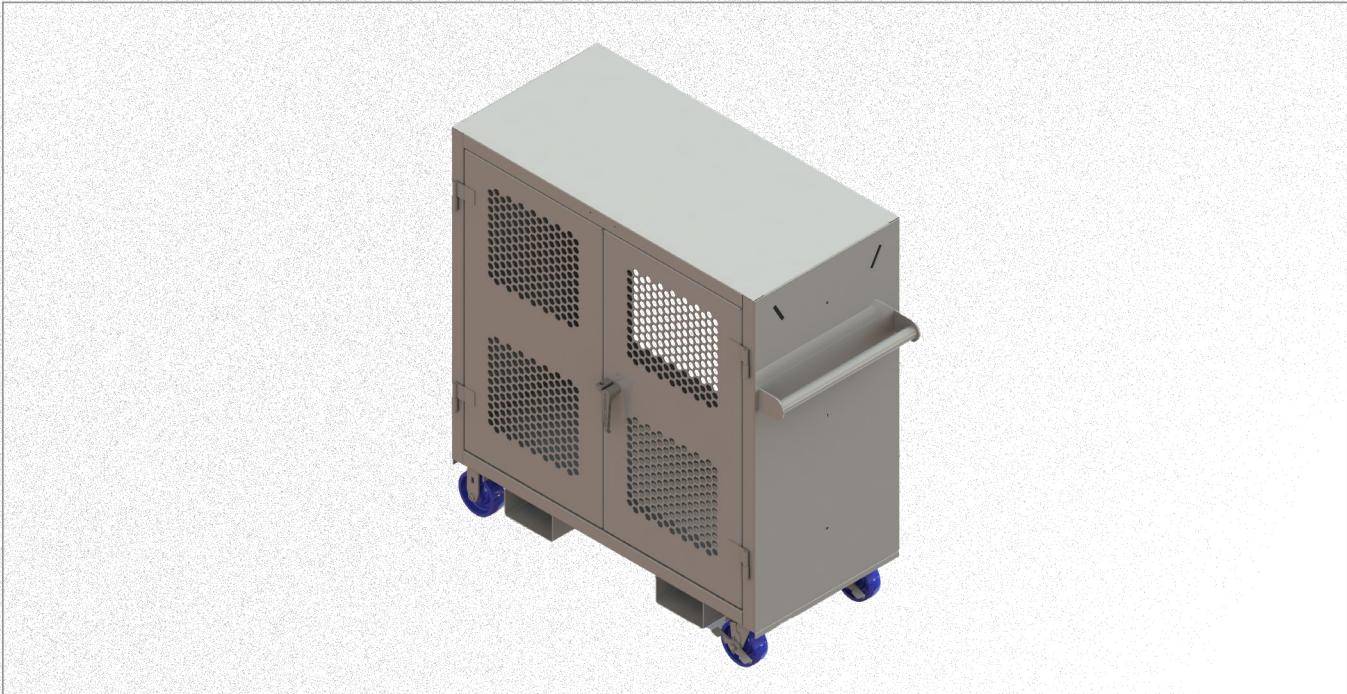
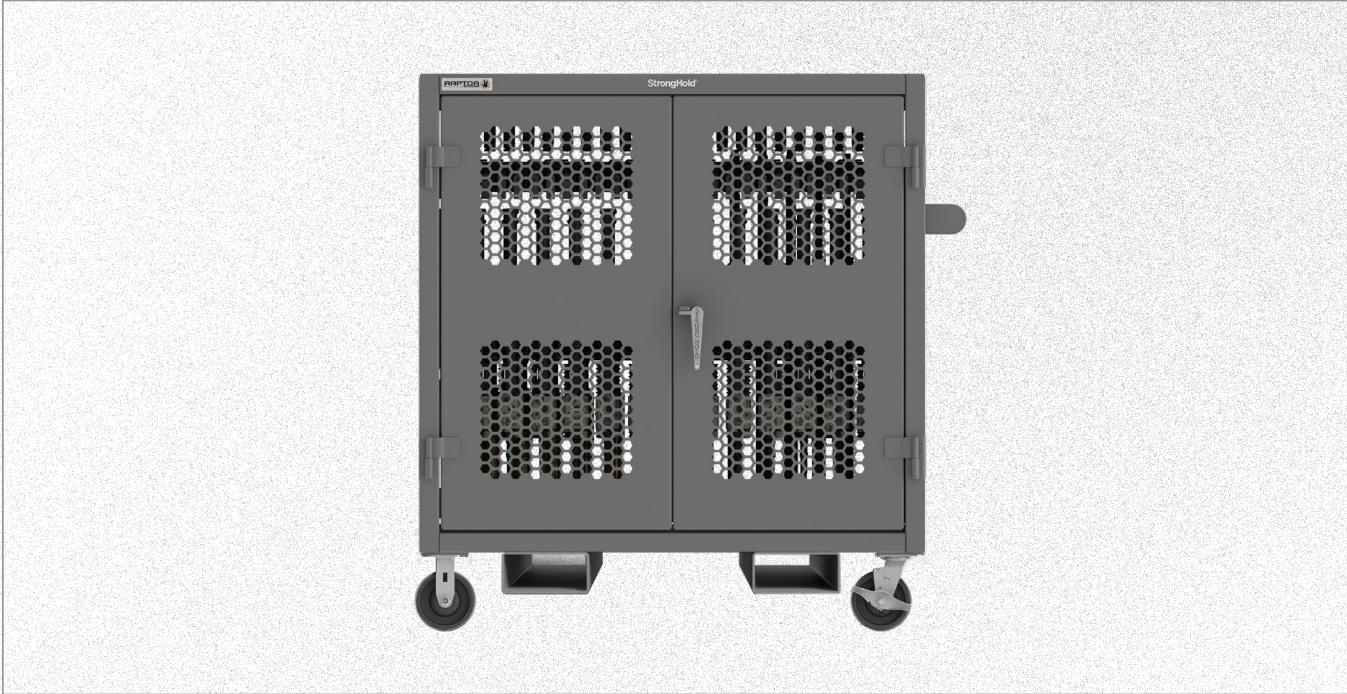


- ▶ Dimensions | 55”H x 24”D x 54”W
- ▶ 14 gauge, all-welded body construction.
- ▶ Interior utilizes Raptor’s™ “Auto-locking” Technology.
- ▶ Forklift pockets and tie down points for secure mobile transport.
- ▶ Hex ventilated pattern on body and doors allows for airflow (diamond pattern available on request).

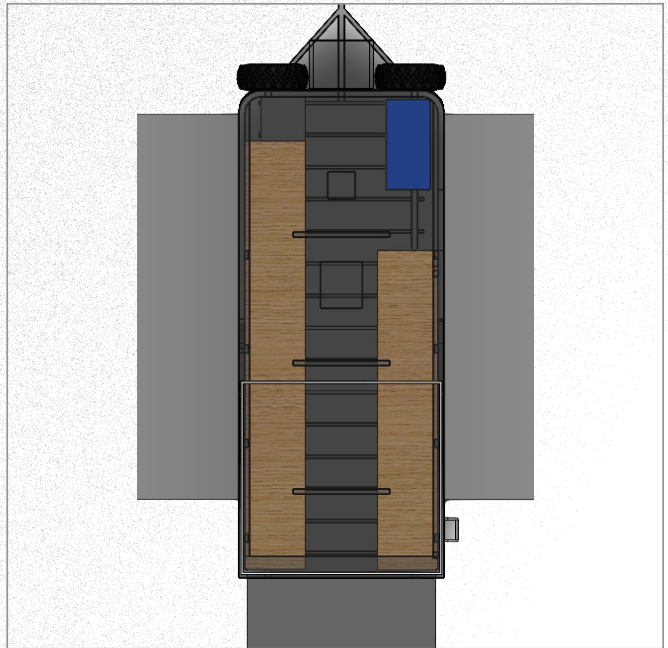
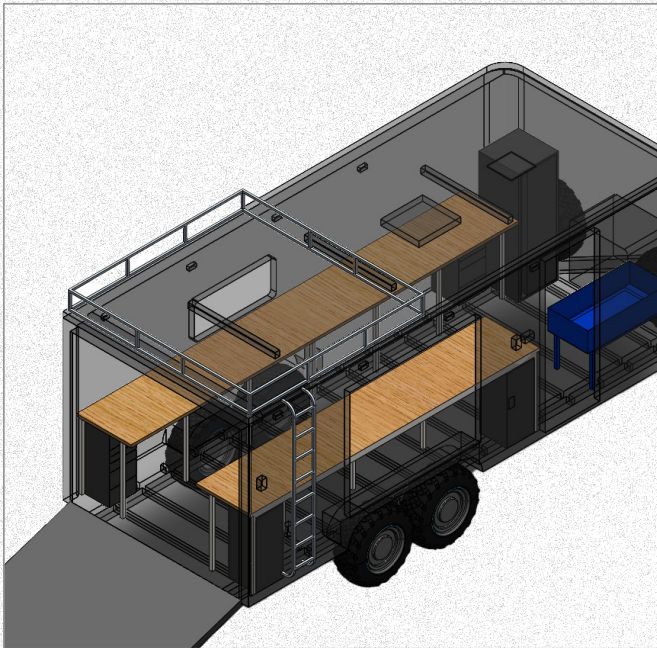
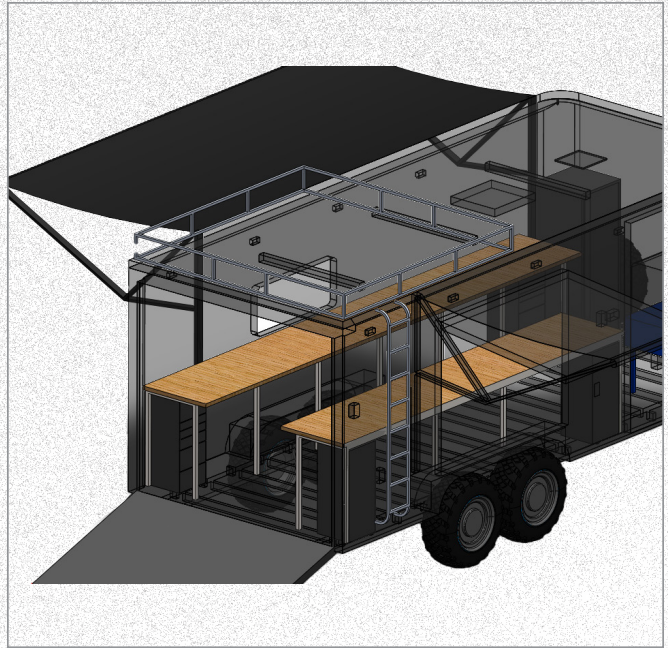




# WEAPONS CART INTERIOR DETAILS & ALT VIEWS



# WEAPONS CLEANING TRAILER





# WEAPONS SPECIFIC MOUNTING

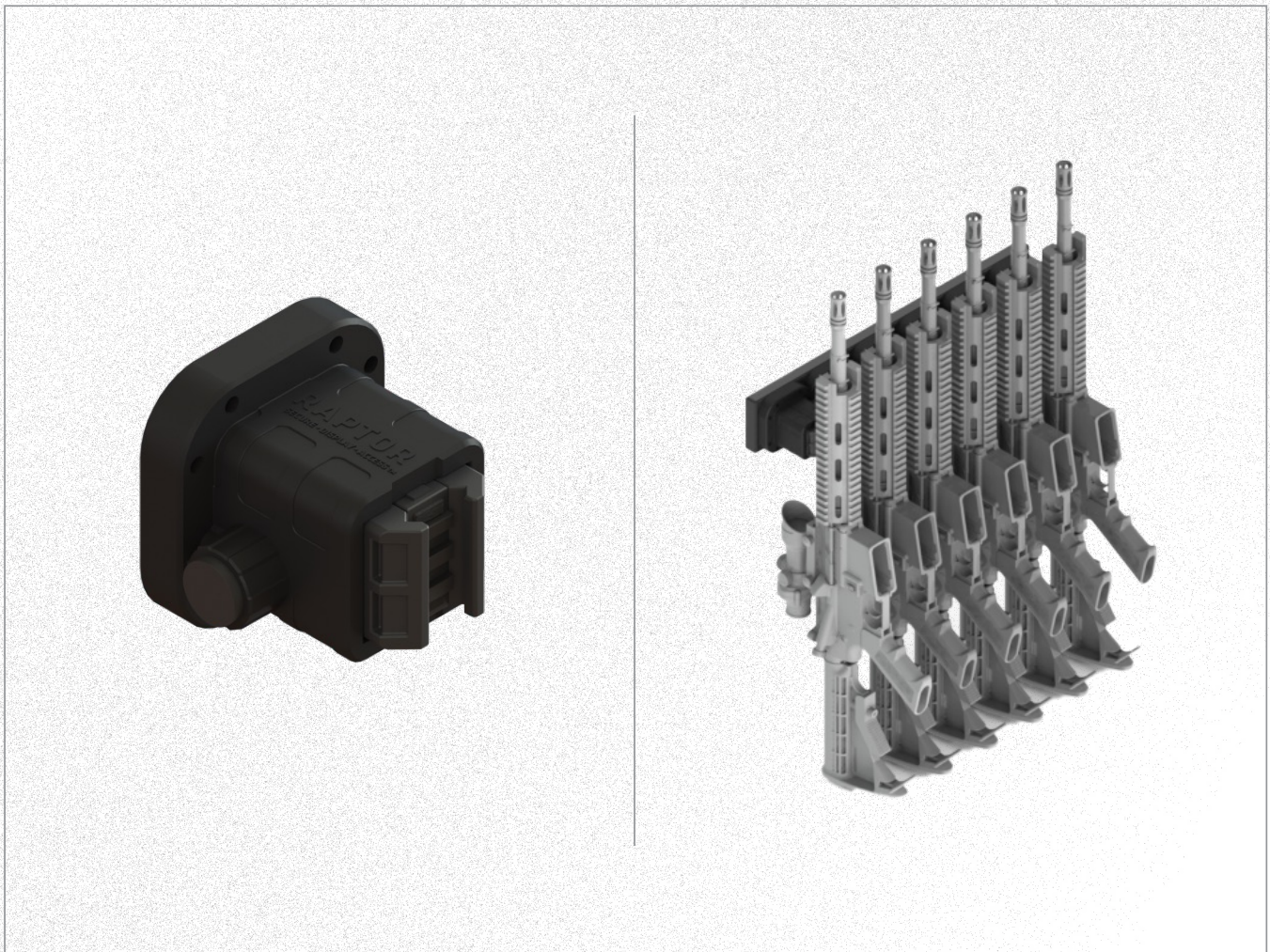
- ▶ “Auto-locking” technology. Simple push to “lock-in and lock-out.”
- ▶ Made with heavy duty high-tech polymer and stainless steel.



# RAPTOR PICATINNY MOUNT™



- ▶ Provides innovative quick access.
- ▶ For use as part of your custom Raptor System™ configuration.
- ▶ Designed for Mil-Spec Picatinny rails.
- ▶ Rubberized Inserts for a tight no-slip grip.



# RAPTOR MAGAZINE MOUNT™



- ▶ Works with standard AR15 lower receivers.
- ▶ Simulated follower engages Battery Assist Device, enabling the charger handle to be pulled back while the bolt carrier group remains retracted.
- ▶ Positively retains the weapon with use of the magazine release.

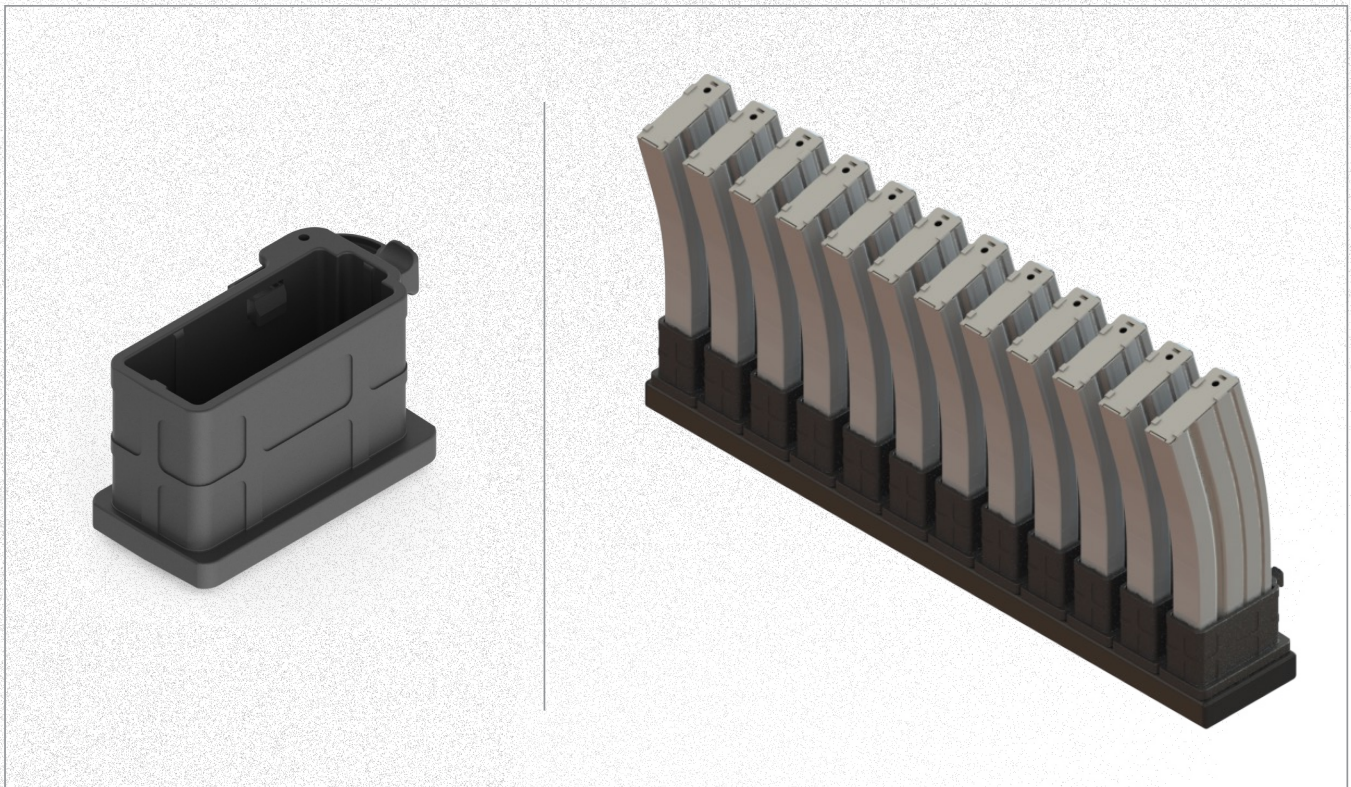




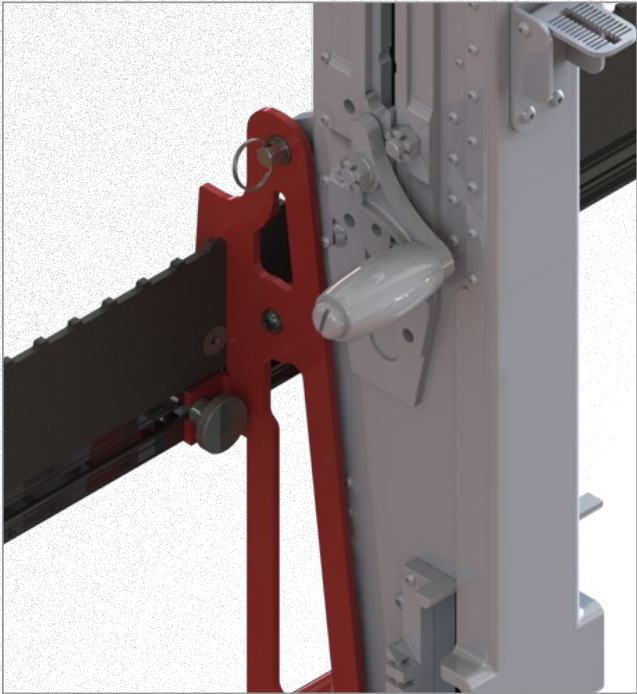
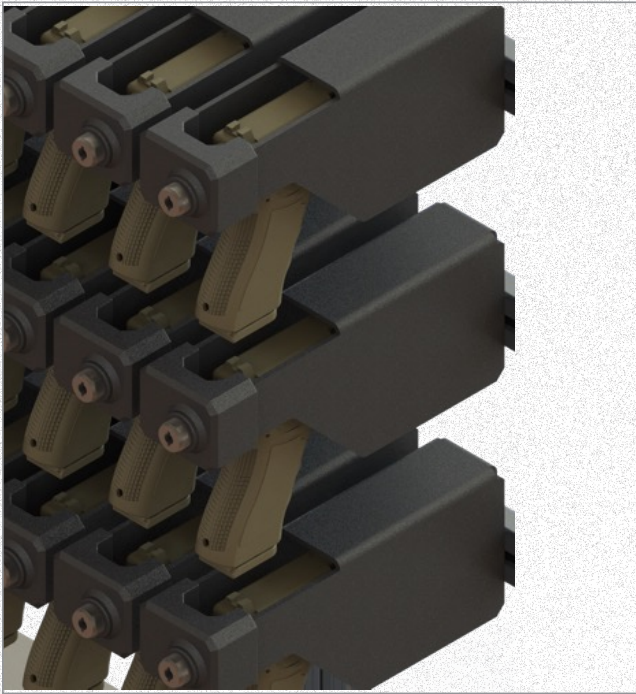
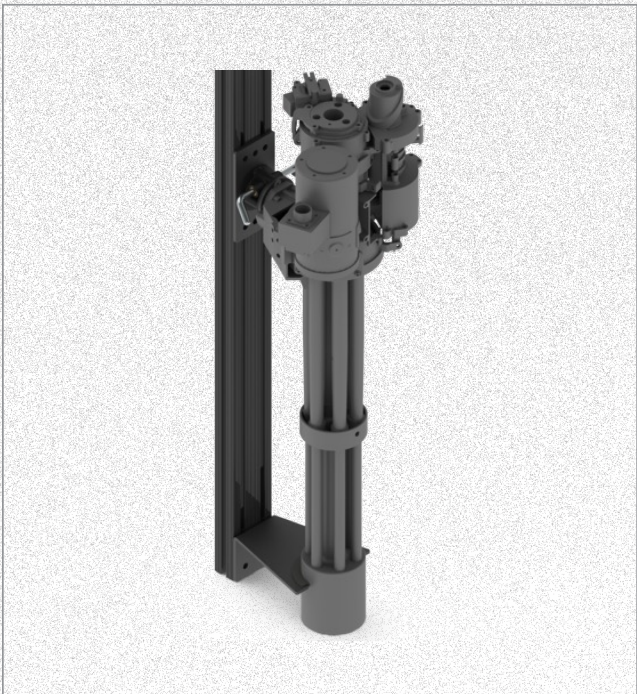
# RAPTOR MAGAZINE MOUNT™



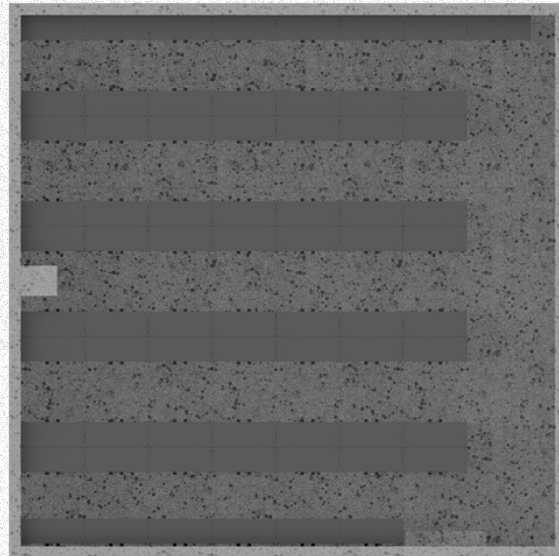
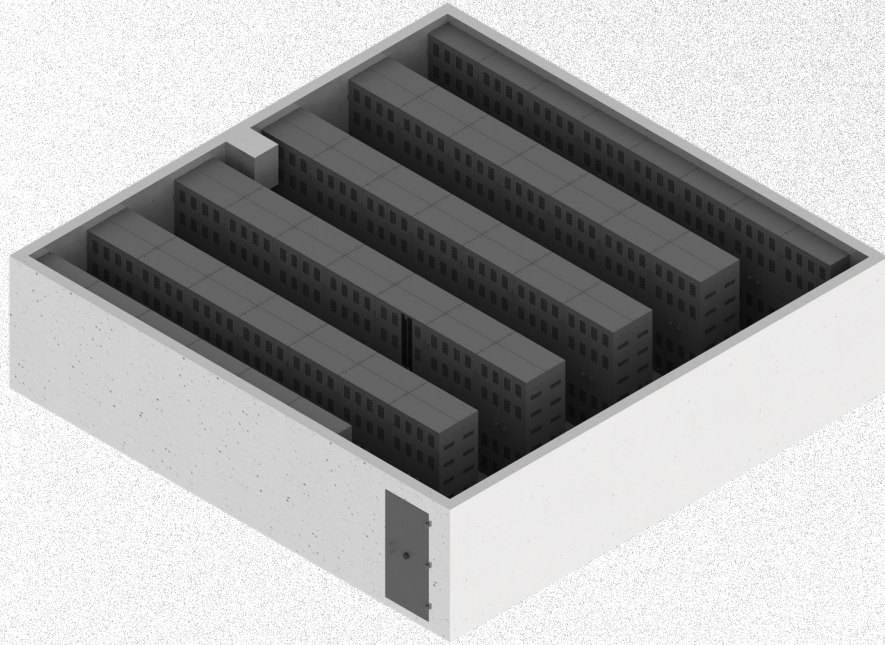
- ▶ Works with all standard GI metal and poly mags.
- ▶ Rapid deployment of magazines by depressing the release lever.
- ▶ Protects ammunition and magazine from debris.
- ▶ Magazines are positively retained and will not fall out.
- ▶ Provides rapid visual accusation of magazine types and color codes for varying round types.
- ▶ Enables immediate visual inventory check and accountability.



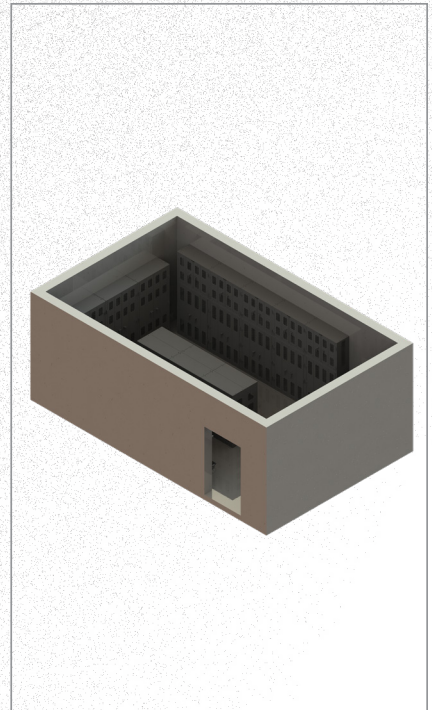
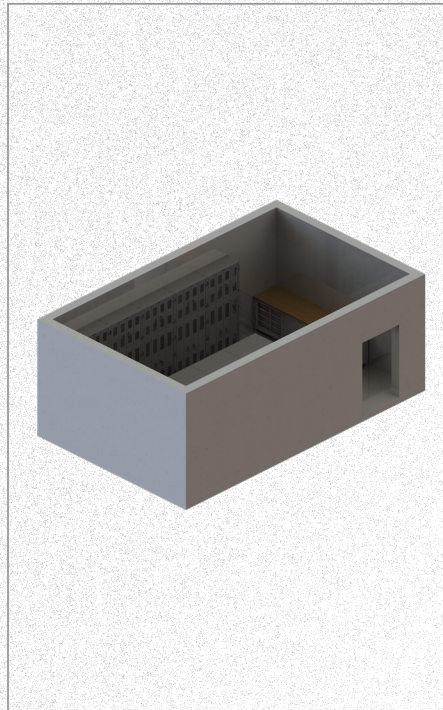
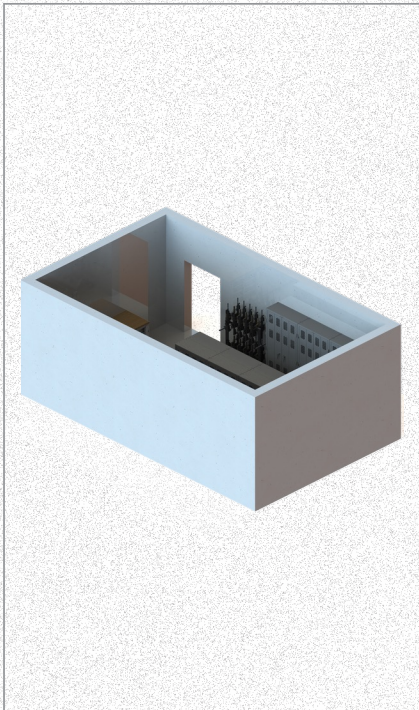
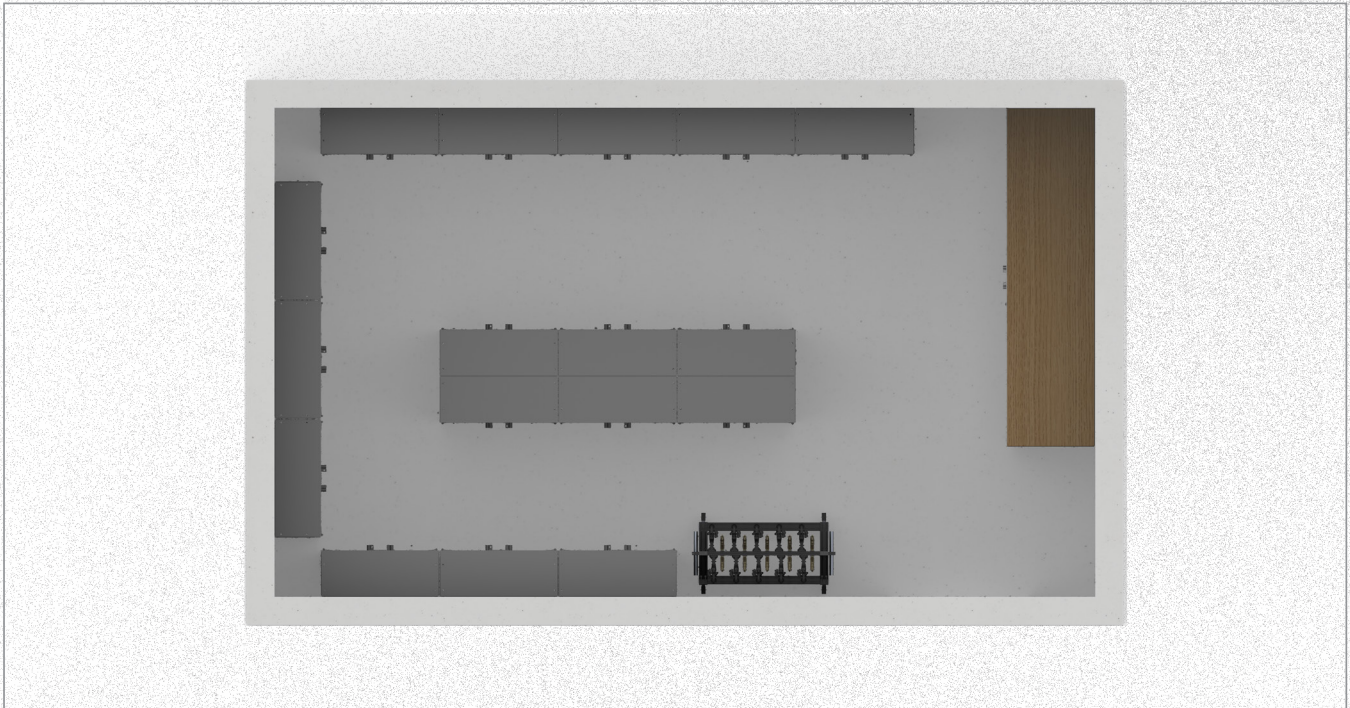
# OTHER MOUNTING EXAMPLES



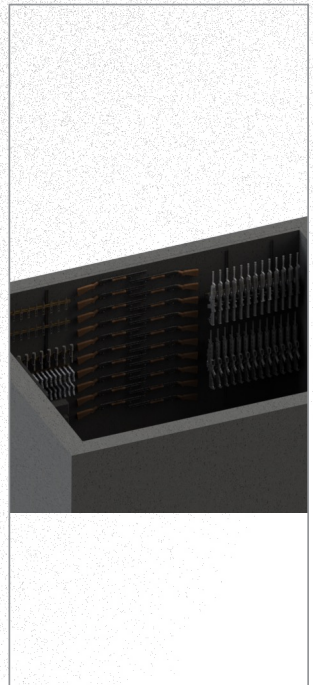
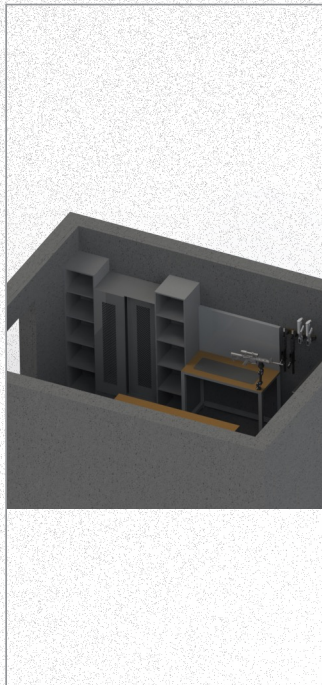
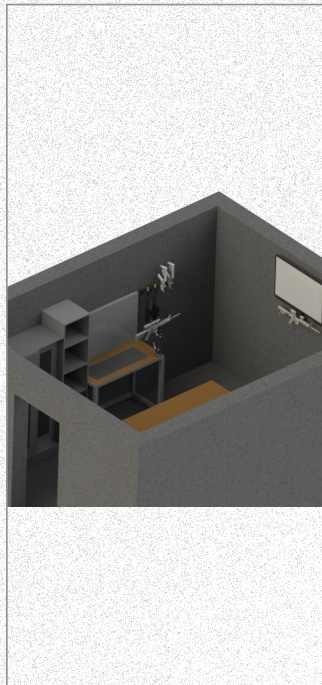
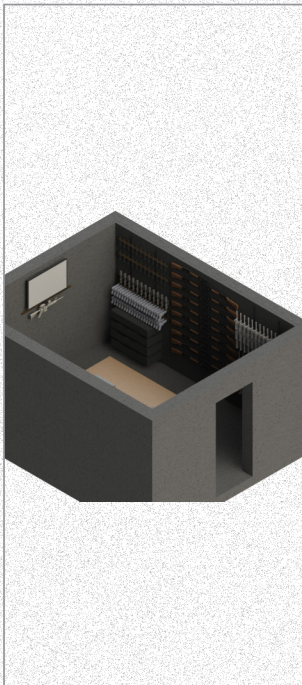
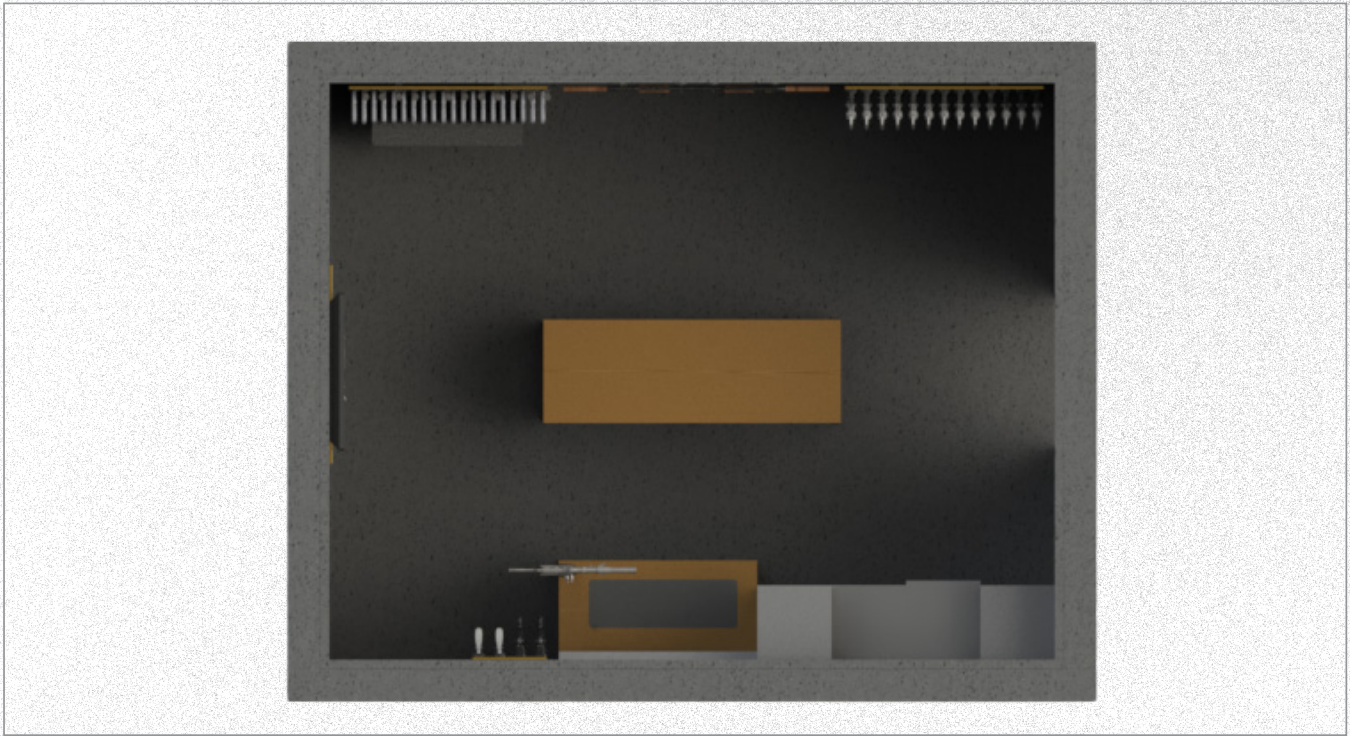
# ARMORY EXAMPLES



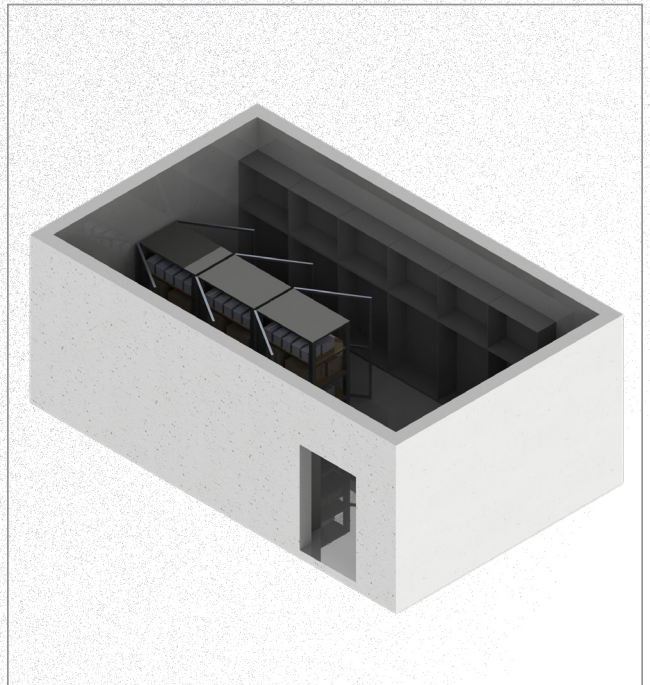
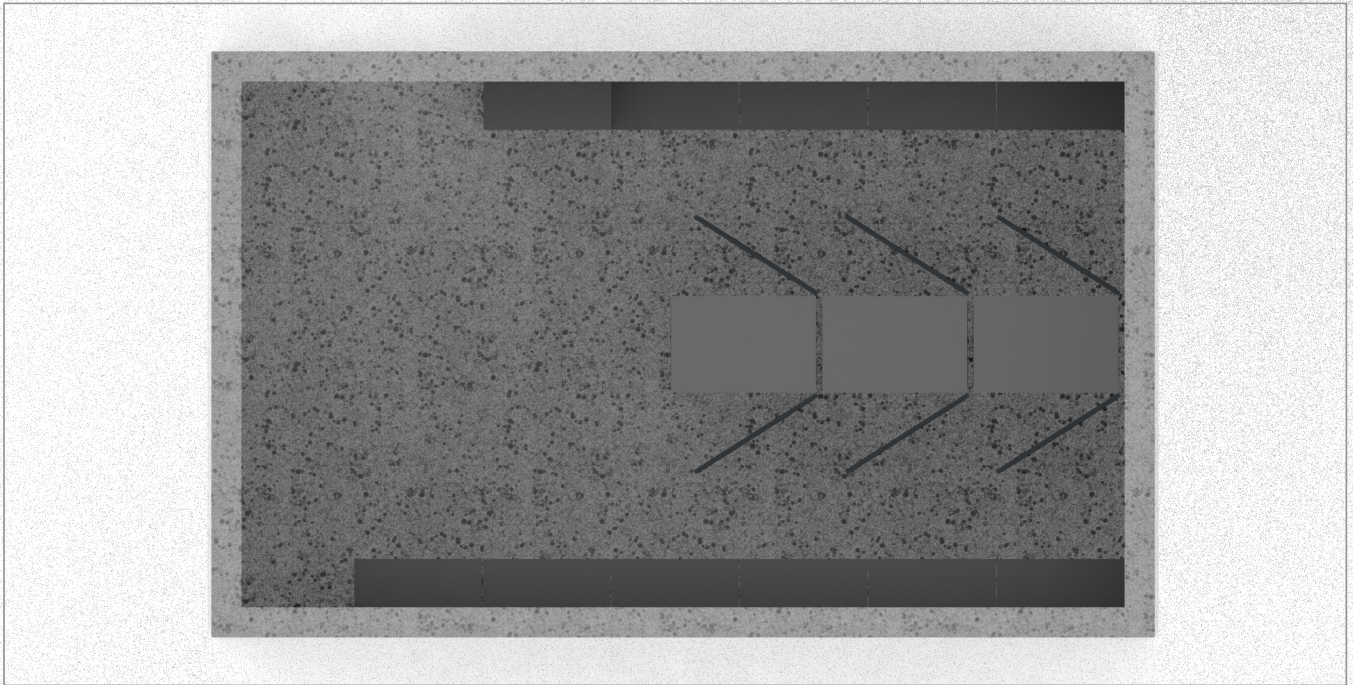
# ARMORY EXAMPLES CONT.



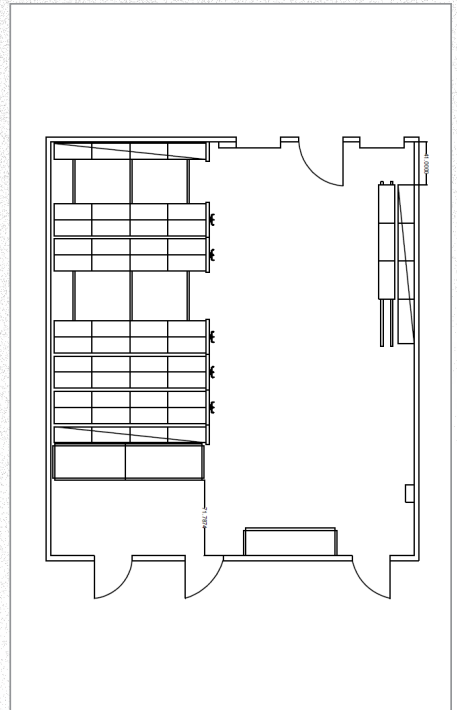
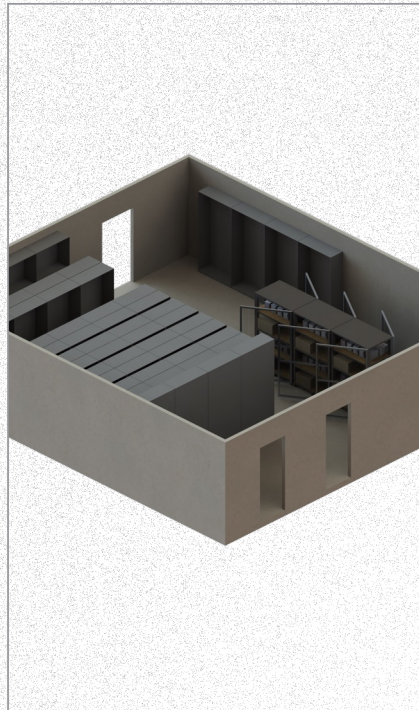
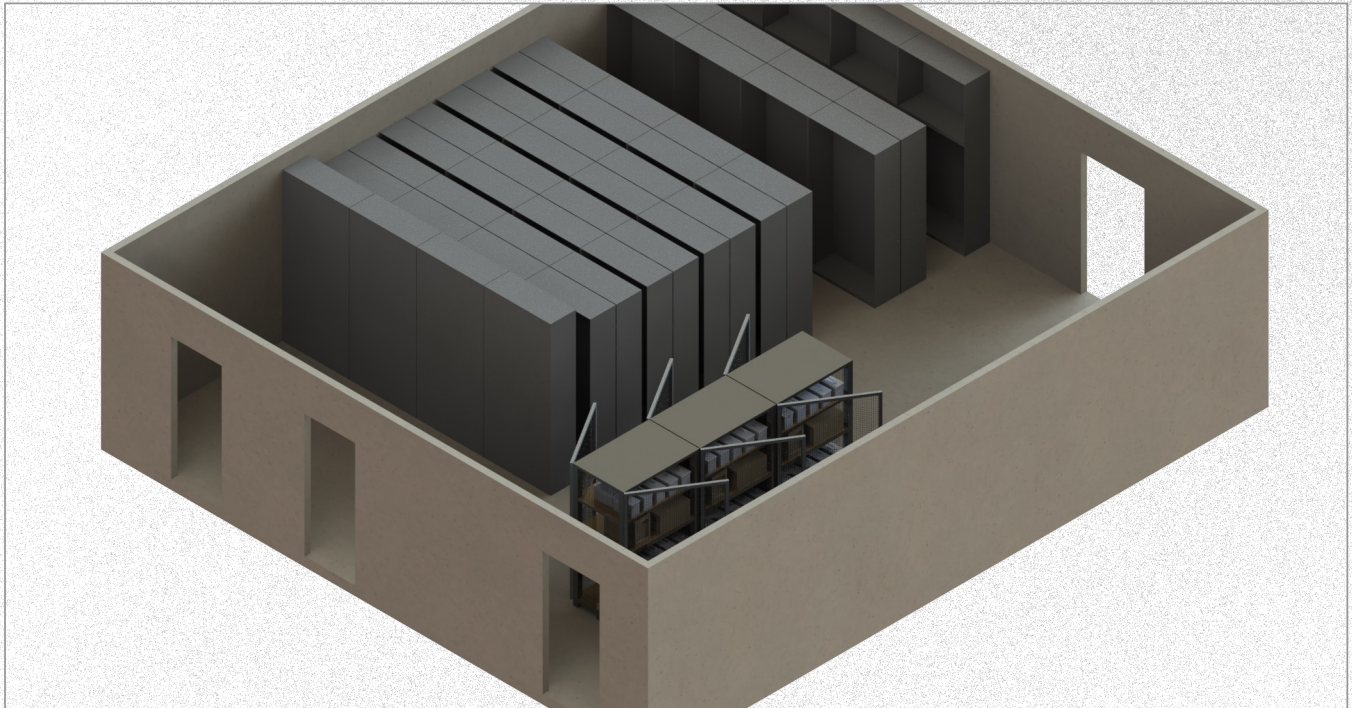
# ARMORY EXAMPLES CONT.



# ARMORY EXAMPLES CONT.

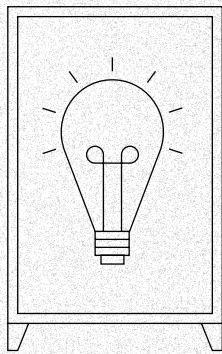


# ARMORY EXAMPLES CONT.

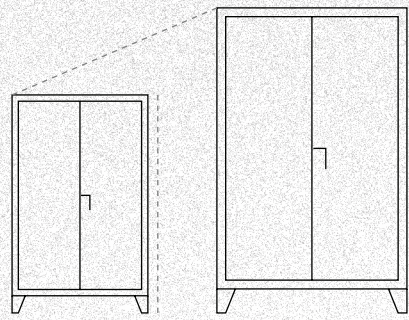




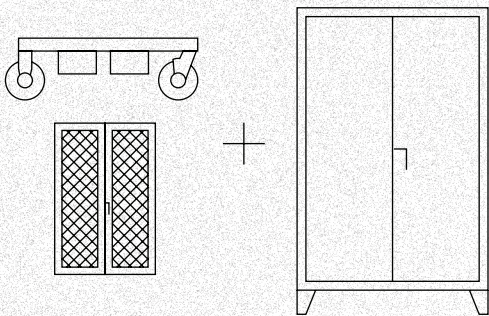
# CUSTOM



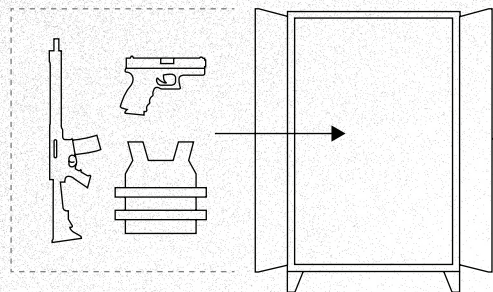
**TELL US YOUR BIG PLAN**



**SWITCH UP THE SIZE**



**ADD ON FEATURES**



**CONFIGURE YOUR INTERIOR**





# ABOUT RAPTOR PRODUCTS



**RAPTOR**  
SECURE DISPLAY ACCESS PRODUCTS



# OUR MOTTO:



# TAKE CARE OF YOUR GEAR AND YOUR GEAR WILL TAKE CARE OF YOU.

Raptor Products was born in the desire to deliver high quality service and performance to the ones who put it all on the line. Engineered and crafted in the USA from heavy-duty high-tech polymer and stainless steel, Raptor Products weapon mounts are designed and produced using only the highest quality of materials to create strong and durable weapon mounts.

Our commitment to new products, custom design capabilities and listening to customer requests will ensure your investment in weapon security is well placed with Raptor Products.

**Trust us to complete your next armory and we will deliver a versatile, efficient and strong mounting system that outperforms the competitors by every measure.**



(800) 880.2625 | [strong-hold.com](http://strong-hold.com) | [usaraptor.com](http://usaraptor.com)

# PROUD TO SUPPORT THOSE WHO SERVE



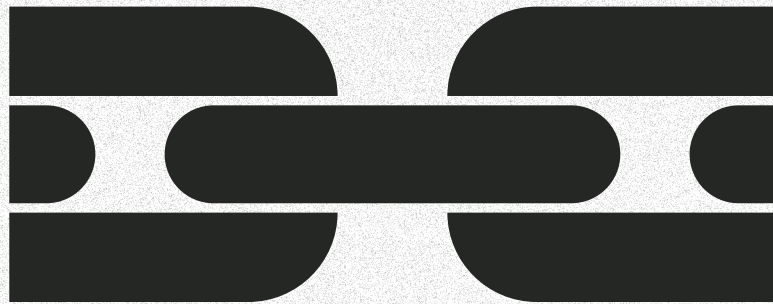
(800) 880.2625 | [strong-hold.com](http://strong-hold.com) | [usaraptor.com](http://usaraptor.com)

# INDUSTRY PARTNERS



(800) 880.2625 | [strong-hold.com](http://strong-hold.com) | [usaraptor.com](http://usaraptor.com)

# ABOUT STRONG HOLD



# StrongHold®

# FOUNDED AND GROUNDED BY FAMILY.



## 1955

Entrepreneur Anthony W. Diebold founds a job shop.



We're challenged to design a premium cabinet that withstands the test of time. (No pressure, right?)

## 1993

Tom and Frank Diebold realized they had something special.

## 1993

Strong Hold is in the third generation of Diebold family stewardship.





# U.S.A. ALL THE WAY.

- ▶ Proudly made in America.
- ▶ Honored to be veteran-owned.
- ▶ Always committed to our communities.



(800) 880.2625 | [strong-hold.com](http://strong-hold.com) | [usaraptor.com](http://usaraptor.com)

# OKAY, WE'LL GO ON...



- ▶ Our 130,000-square-foot facility is designed for ready-to-ship and made-to-order solutions.
- ▶ We employ people from 19 nations, encompassing 24 different languages.
- ▶ We obsess over research, rigorous engineering, innovation and improvement.



(800) 880.2625 | [strong-hold.com](http://strong-hold.com) | [usaraptor.com](http://usaraptor.com)





# ALL TO SERVE STRONG HOLD NATION



(800) 880.2625 | [strong-hold.com](http://strong-hold.com) | [usaraptor.com](http://usaraptor.com)